

### SUSPENDED GRID **LINEAR LIGHT SYSTEM** DESIGNED TO SEAMLESSLY INTEGRATE WITH **SOUNDPLY ACOUSTIC PANELS AND PLANKS.**

#### SATISFY YOUR NEEDS

- Saves time, hassle and costly rework. Our team coordinates between the architect, lighting design and installer to provide a project-specific grid layout so everything fits perfectly.
- Leverage design flexibility across ceilings and walls with continuous runs and custom patterns.
- Simplify sourcing and timelines with one source of supply. All components arrive at the job site together.
- Support well-being and enjoyment of the space with WELL BUILDING compatible options.
- Low maintenance cost with 5-year / 50,000 hour warranty. 10-year upon request.



#### SPECIFICATIONS

##### CONSTRUCTION

Pre-painted black steel utilizing screw fasteners for gear tray connection.

##### MOUNTING & INSTALLATION

Proprietary design and hardware ensure consistent reveal width perfect fit and alignment with SoundPly acoustic panels.

##### OPTICAL

Evenly diffuse flat acrylic lens. End-to-end illumination for even row lighting.

##### ELECTRICAL

LED Light Engine designed for reliability and long-life operation. Standard 0-10V dimming to 1%. 120-277V standard.

##### CONTROLS

Individual or grouping control solutions available. Consult factory for specific requirements.

##### LISTINGS

ETL safety certified for damp locations  
Standard 5 year warranty / 10 year warranty available upon request

##### WELL BUILDING STANDARD COMPATIBLE

- L04 Electric Light Glare Control
- L08 Electric Light Quality
- S04 Reverberation Time
- S05 Sound Reducing Surfaces
- X05 Enhanced Material Restrictions
- X06 Volatile Organic Compound Restrictions



For each listed item, make one selection and enter it in the corresponding box. Some choices may affect cost, lead time, or other factors.

PRAX

1

2

3

4

5

6

7

8

## 1 LENGTH (nominal lengths)

**048** 48"

## 2 WIDTH (nominal widths)

**04** 4"

**XX** CUSTOM (CONSULT FACTORY)

## 3 LIGHT ENGINE

**300LF** 300 LM/FT   **400LF** 400 LM/FT   **500LF** 500 LM/FT  
**650LF** 650 LM/FT   **800LF** 800 LM/FT

## 4 COLOR TEMPERATURE

**830** 3000K, 80 CRI

**840** 4000K, 80 CRI

**930** 3000K, 90 CRI

**940** 4000K, 90 CRI

**835** 3500K, 80 CRI

**850** 5000K, 80 CRI

**935** 3500K, 90 CRI

**950** 5000K, 90 CRI

**TW** TUNABLE WHITE 2700K-6000K

**RGBW30** RGB+WHITE 3000K

**RGBW40** RGB+WHITE 4000K

**RGBW35** RGB+WHITE 3500K

**RGBW50** RGB+WHITE 5000K

## 5 OPTICS

**WB** WELL BUILDING (STANDARD)   **FL** FLAT DIFFUSER

## 6 ROW OPTION

**SAL** STANDALONE

**MID** MIDDLE OF ROW

**END** END/START OF ROW

**PAT** PATTERN (consult factory)

## 7 DIMMING

**SD** STEP DIMMING (BI/TRI LEVEL)

**LVD** 120V LINE VOLTAGE DIMMER

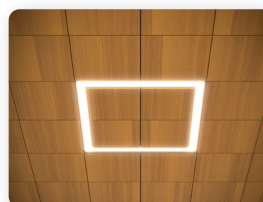
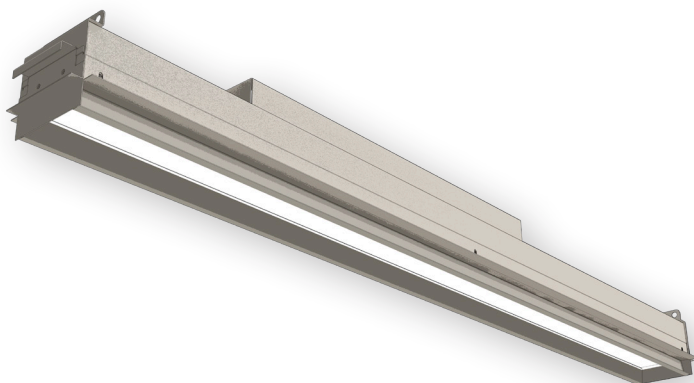
**DIM** PREWIRED FOR 0-10V DIMMING

**WLS** WIRELESS DIMMING

## 8 EMERGENCY POWER

**NA** NONE

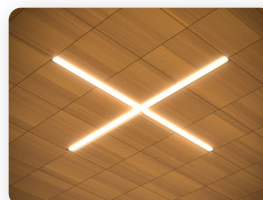
**EM** (6W STANDARD)



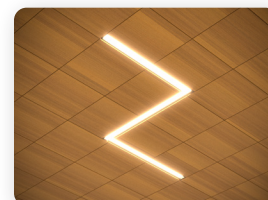
**SQUARE**



**T**



**X**



**CUSTOM**